

EXHIBITION PRESS RELEASE

THE PRESIDENTS

BANKSIDE GALLERY | 11 - 22 June 2025

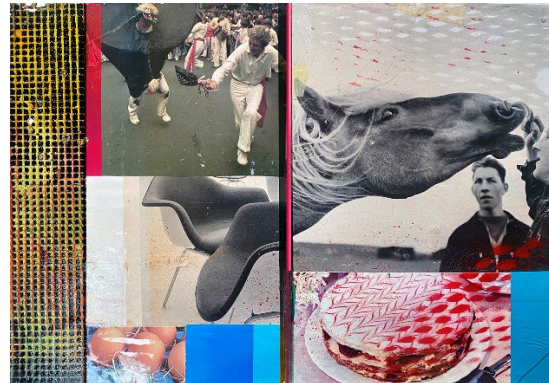
To mark Bankside Gallery's 45th anniversary we are celebrating the work of the Society Presidents, past and present, who have built upon the historic legacy of the Royal Watercolour Society (RWS) and the Royal Society of Painter-Printmakers (RE) and helped mould the Societies into the highly regarded, forward facing body of artists that we see today.

Below is a list of the fourteen living artists who have served as President over the last 35 years, and who demonstrate the diversity of practice in waterbased painting on paper, and the wide range of approaches in original printmaking.

Both Societies select their membership through a rigorous voting process by their peers, which ensures that the artists elected to each Society are amongst the leading contemporary artists in their field. Each of these featured artists has brought their own vision and influence to their respective Society during their time in office.



Charles Williams PRWS, *Big White Bear*, watercolour



David Ferry PRE, *The Mari Lywd*, stencil, photomontage, spray paint and varnish

RWS featured artists:

Charles Williams PRWS President since 2023,
Jill Leman PPRWS 2017 – 2023,
Thomas Plunkett PPRWS 2012 – 2017,
David Paskett PPRWS 2009 – 2012,
Richard Sorrell PPRWS 2006 – 2009,
Francis Bowyer PPRWS 2000 – 2003,
John Doyle PPRWS 1996 – 2000.

RE featured artists:

David Ferry PRE President since 2018,
Mychael Barratt PPRE 2013 - 2018,
Bren Unwin PPRE 2011 - 2013,
Hilary Paynter PPRE 2006 - 2011,
Anita Klein PPRE 2003 - 2006,
David Carpanini PPRE 1995 - 2003,
Joseph Winkelman PPRE 1989 – 1995.

Cont'd...

NOTES TO EDITORS

CONTACT

For further information, please contact Natalie Suggitt: nsuggitt@banksidegallery.com

IMAGES

Exhibition images available from 20 May 2025

THE SOCIETIES

The Royal Watercolour Society (RWS), founded in 1804, is the oldest and most prestigious watercolour society in the world. Its artists are amongst the finest practitioners in contemporary water-based painting, working in a variety of media including gouache, acrylic, pen & ink, pigment, collage and mixed media as well as traditional watercolour.

The Royal Society of Painter-Printmakers (RE), founded in 1880, has a broad membership of artists working in all kinds of printmaking, and like the RWS, elects its members by peer review, ensuring the high standard of technical expertise throughout the society and bringing together some of the most innovative and creative artists working in every print-based medium imaginable.

Both Societies promote, by example and education, the understanding, appreciation and enjoyment of these diverse media. The two societies first began sharing an exhibition space at 5a Pall Mall in 1889 and their association has continued ever since, and Bankside Gallery has been their home since 1980.

BANKSIDE GALLERY

Bankside Gallery is the home of the Royal Watercolour Society (RWS), and the Royal Society of Painter Printmakers (RE). Its vibrant exhibitions celebrate the very best in contemporary water based media and original print, championing the work of both new and established artists. For 45 years Bankside Gallery has played a crucial role in displaying and promoting work on paper; exploring its boundaries while supporting education activities organised by the RWS and RE. Opened by Her Majesty Queen Elizabeth II in 1980, Bankside Gallery is a registered educational charity and receives no government funding.

Bankside Gallery (next to Tate Modern) | 11- 22 June 2025 | Open daily 11am – 6pm