



## Print REbels

Haden, Palmer, Whistler and the Origins of the RE (The Royal Society of Painter-Printmakers)

25 April - 13 May 2018, Private View 24 April 6-8pm

Bankside Gallery Then touring to other UK venues in 2018 and 2019



1.

*Print REbels* celebrates the 200th anniversary of the birth of the founder and first President of the Royal Society of Painter-Printmakers, Sir Francis Seymour Haden. A prestigious collection of works has been brought together to show prints produced by Haden along with those who inspired him such as Rembrandt and Dürer, and his contemporaries, including Samuel Palmer and JAM Whistler.

In 1880, the time the RE was founded, artists such as Haden, Palmer and Whistler were considered revolutionary in their championing of printmaking as a creative medium. In mid-Victorian England, printmaking was seen primarily as a means to make reproductions of artworks, and many printmakers only made a living working as a copyist. These printmakers were not eligible for membership of The Royal Academy, as creative printmaking was not recognised as an art form on the same level as painting and sculpture. It was this that prompted Haden to rebel against this and form a new society, the RE. Haden and Whistler are credited with instigating the *Etching Revival*, an art movement which lasted 75 years.

The RE has always been closely connected with the RA, with several Royal Academicians being founding members of the RE along with Seymour Haden, and the 2<sup>nd</sup> 3<sup>rd</sup> and 4<sup>th</sup> RE Presidents being also RAs. This is represented in the *Print REbels* exhibition by the inclusion of works by these three past RE Presidents; Sir Frank Short, Malcolm Osborne and Robert Austin. Works feature by other Royal Academician RE Members also, including Frank Brangwyn, Henry Rushbury, Anthony Gross, Julian Trevelyan, Norman Ackroyd, Anne Desmet, Peter Freeth and Chris Orr. 2018 is also the 250<sup>th</sup> anniversary of the Royal Academy, making this a fitting time to honour this connection.





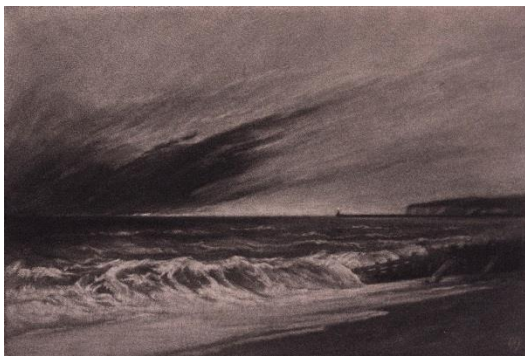
# ROYAL SOCIETY OF PAINTER-PRINTMAKERS

Bankside Gallery | 48 Hopton Street | London SE1 9JH | 020 7928 7521 | [info@banksidegallery.com](mailto:info@banksidegallery.com)

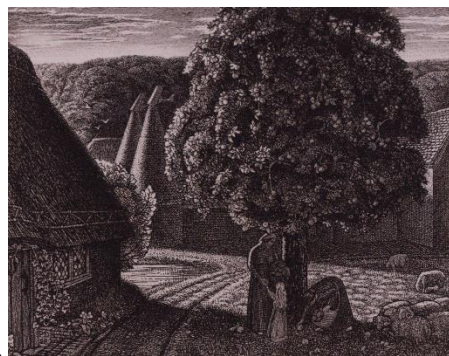
The RE continues to thrive today with over 130 elected members and with Mychael Barratt as its President. A work by each of the RE Presidents from the Society's beginning to the present day will feature in this exhibition, giving an overview of printmaking produced throughout the chapters of the RE's history.

The current members of the RE have been invited to produce a new print which responds directly to their Society's heritage. Each artist chose another RE member, past or present, or one of the other artists involved in the Society's history reflected in the Print REbels exhibition, who has inspired them as a printmaker. Twenty five of these works have been chosen for a *Print REbels* box set by Jenny Ramkalawon, Assistant Keeper of Prints and Drawings at the British Museum.

A catalogue has been produced to accompany this exhibition, with a rich history of Sir Francis Seymour Haden's life and its intertwining with the RE, and the contributions made by the second RE President, Sir Frank Short, plus those of Whistler and Palmer towards Haden's vision and journey. With much previously unpublished material, the catalogue shows the origins and historical legacy of the Royal Society of Painter-Printmakers. Written and compiled by Edward Twohig ARE, his passion and knowledge for the medium of print has fuelled this ambitious project and allowed this documentation of a key element in the history of printmaking as an art form.



2.



3.

Images:

1. Sir Francis Seymour Haden PPRE (1818-1910), *Breaking Up of The Agamemnon, No.1*, etching with drypoint, 1870 (RE President from the Society's establishment in 1880 until 1910)
2. Sir Frank Short RA PPRE (1857-1945), *The Angry Cloud, Seaford*, mezzotint 1930 (PRE from 1910-1938)
3. Paul Drury PPRE (1903-1987), *September*, etching 1928 (PRE from 1970-1975)

## NOTES TO EDITORS:

**Print REbels** will be touring to the following locations

**Mount House Gallery, Marlborough** (selected highlights) from 10 - 28 January 2018, Private View 12<sup>th</sup> January 7-9pm

**Bankside Gallery, London** from 25 April - 13 May 2018, Private View 24<sup>th</sup> April 6-8pm

**Fitzwilliam Museum, Cambridge** (selected highlights) from 18 September – 6 January 2019

**Burton Art Gallery, Bideford, Devon** 23 September - 4 November 2018, Private View 22 September

**The School of Art Museum, Aberystwyth, Wales** 18 Feb 2019 – 13 May 2019

**The Royal Society of Painter-Printmakers (RE)** is one of the world's premier printmaking organisations. All of the Society's members are practising professional printmakers, elected after a rigorous selection by a panel of their peers. From their home at Bankside Gallery, next to Tate Modern & on the south banks of the Thames, they hold regular exhibitions showcasing the best in contemporary printmaking.

A catalogue will be available to accompany this exhibition, published by Royal Society of Painter-Printmakers in April 2018, written and compiled by Edward Twohig ARE. Edited by Anne Desmet RA RE.

For press enquiries please contact [NSuggitt@banksidegallery.com](mailto:NSuggitt@banksidegallery.com)

